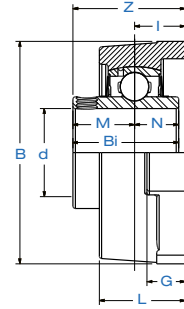
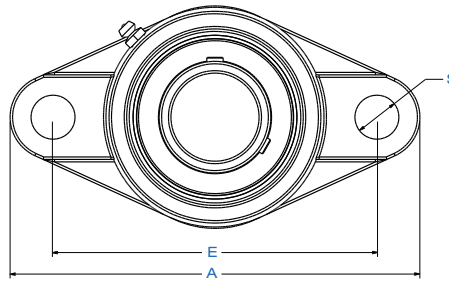


SUCSFLM 200

Normal-Duty 2-Bolt Flange Block
Large Bolt Holes
Setscrew Lock



Seal Styles



Standard Seal with Flinger



Triple-Lip L3 Seal

Bearing Number	Shaft Dia.	Dimensions in. mm.											Bolt Used	Load Rating		Bearing Insert	Housing Number	Wt.
	d in. mm.	A	E	I	G	L	S	B	Z	Bi	N	M		in. mm.	Dynamic Cr			
SUCSFLM 201	12																	
SUCSFLM 201-8	1/2																	
SUCSFLM 202	15																	
SUCSFLM 202-10	5/8	4.45	3.54	0.59	0.47	1.00	0.47	2.36	1.31	1.2205	0.5000	0.7205	3/8	2,331	1,142	SFLM 204	1.3 0.6	
SUCSFLM 203	17	113.0	90.0	15.0	12.0	25.5	12.0	60.0	33.3	31.0	12.7	18.3	M10	10.37	5.08			
SUCSFLM 204-12	3/4																	
SUCSFLM 204	20																	
SUCSFLM 205-14	7/8																	
SUCSFLM 205-15	15/16	5.12	3.90	0.63	0.55	1.06	0.63	2.68	1.41	1.3425	0.5630	0.7795	1/2	2,542	1,349	SFLM 205	1.8 0.8	
SUCSFLM 205	25	130.0	99.0	16.0	14.0	27.0	16.0	68.0	35.8	34.1	14.3	19.8	M14	11.31	6.00			
SUCSFLM 205-16	1																	
SUCSFLM 206-17	1 1/16																	
SUCSFLM 206-18	1 1/8																	
SUCSFLM 206	30	5.83	4.61	0.71	0.51	1.22	0.63	3.15	1.58	1.5000	0.6260	0.8740	1/2	3,554	1,942	SFLM 206	2.2 1.0	
SUCSFLM 206-19	1 3/16	148.0	117.0	18.0	13.0	31.0	16.0	80.0	40.2	38.1	15.9	22.2	M14	15.81	8.64			
SUCSFLM 206-20	1 1/4																	
SUCSFLM 207-20	1 1/4																	
SUCSFLM 207-21	1 15/16																	
SUCSFLM 207-22	1 3/8	6.34	5.12	0.75	0.59	1.34	0.63	3.54	1.75	1.6890	0.6890	1.0000	1/2	4,683	2,626	SFLM 207	3.1 1.4	
SUCSFLM 207	35	161.0	130.0	19.0	15.0	34.0	16.0	90.0	44.4	42.9	17.5	25.4	M14	20.83	11.68			
SUCSFLM 207-23	1 7/16																	
SUCSFLM 208-24	1 1/2																	
SUCSFLM 208-25	1 9/16	6.89	5.67	0.83	0.61	1.42	0.63	3.94	2.02	1.9370	0.7480	1.1890	1/2	5,294	3,057	SFLM 208	3.5 1.6	
SUCSFLM 208	40	175.0	144.0	21.0	15.5	36.0	16.0	100.0	51.2	49.2	19.0	30.2	M14	23.55	13.60			
SUCSFLM 209-26	1 5/8																	
SUCSFLM 209-27	1 11/16																	
SUCSFLM 209-28	1 3/4	7.32	5.83	0.87	0.63	1.50	0.75	4.19	2.06	1.9370	0.7480	1.1890	5/8	5,923	3,507	SFLM 209	4.0 1.8	
SUCSFLM 209	45	186.0	148.0	22.0	16.0	38.0	19.0	106.5	52.2	49.2	19.0	30.2	M16	26.35	15.60			
SUCSFLM 210-30	1 7/8																	
SUCSFLM 210-31	1 15/16																	
SUCSFLM 210	50	7.68	6.18	0.87	0.67	1.57	0.75	4.45	2.15	2.0315	0.7480	1.2835	5/8	6,402	4,046	SFLM 210	5.3 2.4	
SUCSFLM 210-32	2	195.0	157.0	22.0	17.0	40.0	19.0	113.0	54.6	51.6	19.0	32.6	M16	28.48	18.00			
SUCSFLM 211-32	2																	
SUCSFLM 211-34	2 1/8																	
SUCSFLM 211	55	8.78	7.24	0.98	0.79	1.69	0.75	5.12	2.30	2.1890	0.8740	1.3150	5/8	7,931	5,036	SFLM 211	6.4 2.9	
SUCSFLM 211-35	2 3/16	223.0	184.0	25.0	20.0	43.0	19.0	130.0	58.4	55.6	22.2	33.4	M16	35.28	22.40			
SUCSFLM 212-36	2 1/4																	
SUCSFLM 212	60	9.80	7.95	1.14	0.81	1.89	0.91	5.59	2.70	2.5630	1.0000	1.5630	3/4	9,554	5,921	SFLM 212	9.7 4.4	
SUCSFLM 212-38	2 3/8	249.0	202.0	29.0	20.5	48.0	23.0	142.0	68.7	65.1	25.4	39.7	M20	42.50	26.34			
SUCSFLM 212-39	2 7/16																	

MARINER®